

LEDI® 2S NTP



Flush mounting clock NTP Synchronization

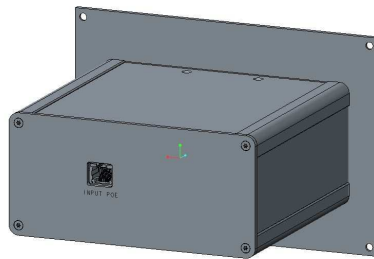
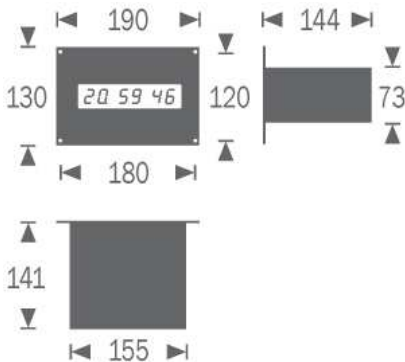
LED display: Hour, Minute, Second.
Configurable LED: red, yellow, green.
Digit height: Hour/minute/second : 20mm
Power supply available: PoE, 24-48 VDC, 230 VAC
Front face: 190(l)x130(h) mm
Aluminium case.
 Legible up to 7 meters
 Manual adjust luminosity
Perfectly silent, direct and accurate reading of time.
An easy "plug and play" installation. "



**Complies to EMC Directive 98/366 EEC including directive 93/68.
 EN 55024, EN 55022, EN 60950**

Power supply	PoE class 3, 24-48 VDC, 230 VAC
Certifications	CE, EN 60950, EN 55022, EN 55024, ROHS
IP	30
MTBF	56 000 h.
MTTR	Display : 10 min
Weight	~ 1kg
Operating temperature	-10° to 50°C

Dimensions



Back face for NTP/POE Version
Cable supplied: 3 m Ethernet CAT5E.



Back face for NTP/230 VAC Version
Cable supplied: 3m Ethernet CAT5E,
and 2 m Power AC EU/IEC C13.

Remote configuration and time setting via WEB interface. Automatic time zone choice and daylight saving time change.
 Supervision via SNMP, configuration via Telnet, IP configuration with 'GT Network Manager' (Windows® NT/XP/2000/Vista (32 bits)/ Windows 7)

		92212					
VERSION							
NTP input – Ethernet 10/100 base T		<input checked="" type="checkbox"/>	<input type="checkbox"/>	<input type="checkbox"/>	<input type="checkbox"/>	<input type="checkbox"/>	<input type="checkbox"/>
POWER SUPPLY							
230VAC/50-60Hz		<input checked="" type="checkbox"/>	<input type="checkbox"/>	<input type="checkbox"/>	<input type="checkbox"/>	<input type="checkbox"/>	<input type="checkbox"/>
PoE (Power over Ethernet)		<input checked="" type="checkbox"/>	<input type="checkbox"/>	<input type="checkbox"/>	<input type="checkbox"/>	<input type="checkbox"/>	<input type="checkbox"/>
24-48 VDC		<input checked="" type="checkbox"/>	<input type="checkbox"/>	<input type="checkbox"/>	<input type="checkbox"/>	<input type="checkbox"/>	<input type="checkbox"/>
FRONT FACE							
Front face : 190x130mm		<input checked="" type="checkbox"/>	<input type="checkbox"/>	<input type="checkbox"/>	<input type="checkbox"/>	<input type="checkbox"/>	<input type="checkbox"/>

